

Tindal Square and Market Road Project Update



Transforming Tindal Square:
Public Realm Improvements

Bulletin No. 25

26th April 2023

Contractor Details:

Tindal Square – Dyer & Butler

Market Road – Marlborough Ltd

Project Manager – Rob Venables/Phil Cowland



Latest Achievements:

- All street furniture has been installed, this also includes the benches, wayfinding signage and cycle signs.
- Paving for the western area of the scheme is substantially complete and is open for the public to access. The paving installation has progressed to the east of Shire Hall working towards the New Street area.
- All the steps for the new access are complete and temporary handrails will be installed to ensure safety when using the area.
- The cycle stands have been installed and are available for the public to use.



Tindal Square and Market Road Project Update



Transforming Tindal Square:
Public Realm Improvements

Bulletin No. 25
26th April 2023



Tindal Square and Market Road Project Update

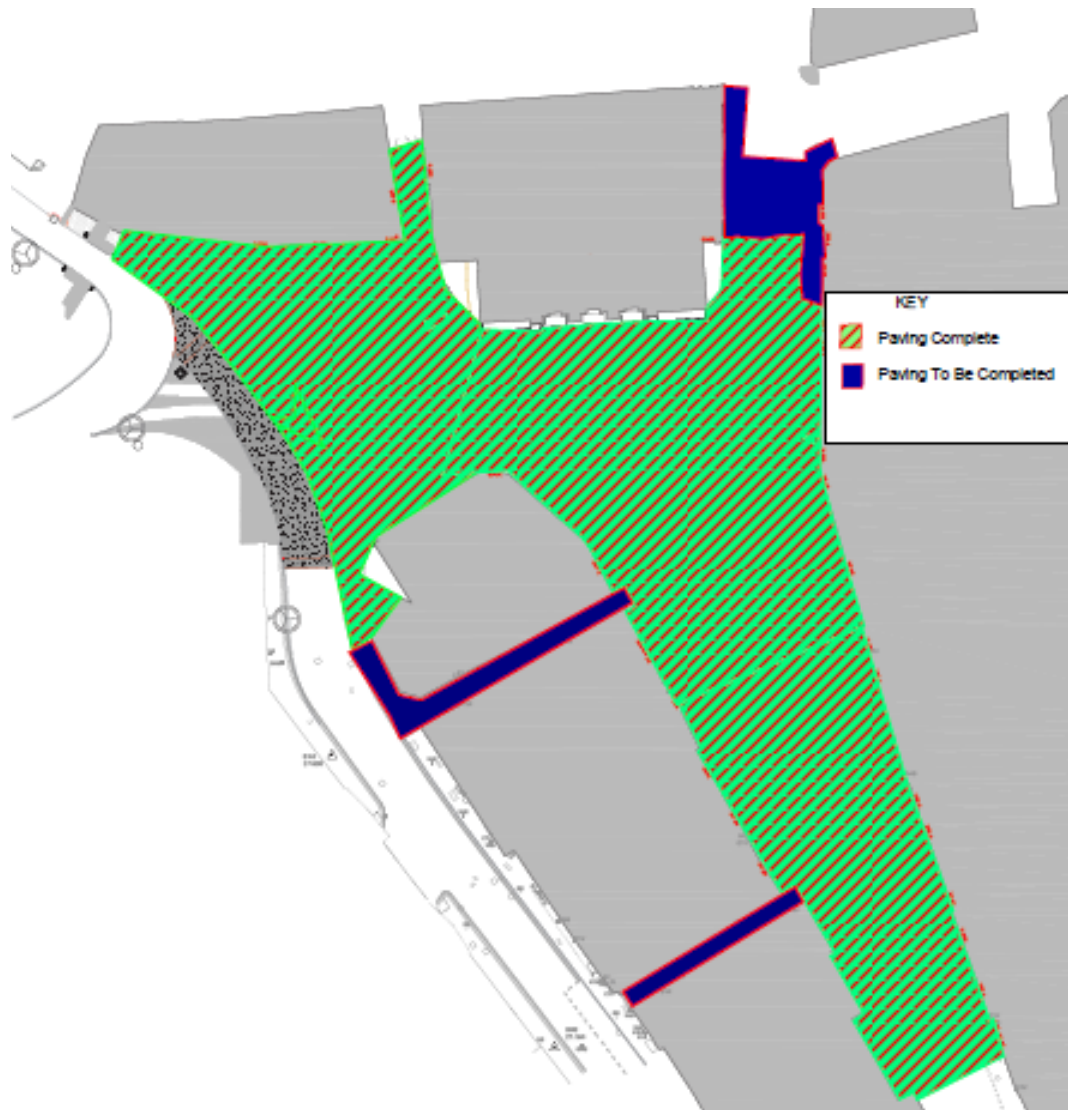


Transforming Tindal Square:
Public Realm Improvements

Bulletin No. 25
26th April 2023

Filming at Shire Hall

From the 24th April 2023 Shire Hall will be used by a television production company. This involves filming inside the building and will last for six weeks. During this period street works that generate noise or vibration are not permitted. We have taken the decision to pause works until filming finishes in early June with works stopping towards the end of April. Once the company leaves Shire Hall we will complete the final minor areas highlighted in blue on the diagram below; this includes the stone cladding, handrails and railings to Shire Hall steps together with some electrical works.

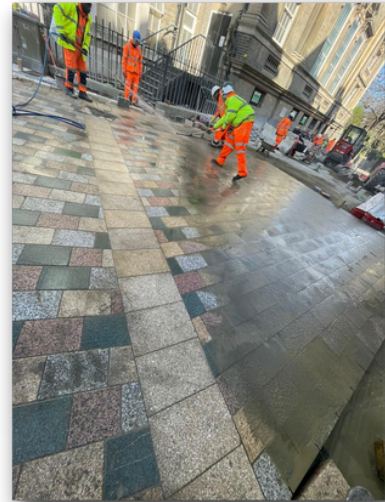
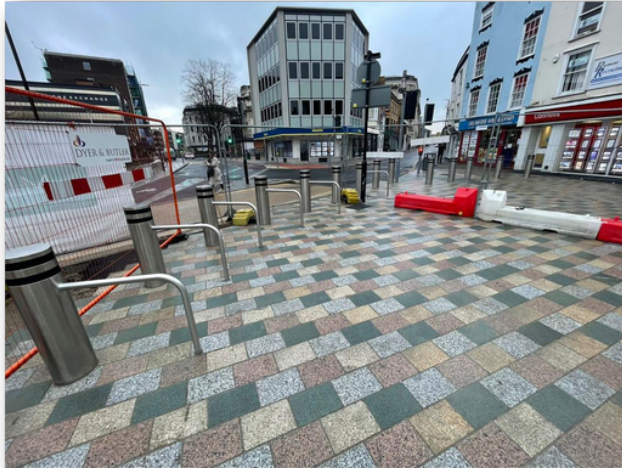


Tindal Square and Market Road Project Update



Transforming Tindal Square:
Public Realm Improvements

Bulletin No. 25
26th April 2023



Tindal Square and Market Road Project Update



Transforming Tindal Square:
Public Realm Improvements

Bulletin No. 25

26th April 2023

Safe walking routes

The diagram below shows the safe walking routes. Please note access to businesses will be always maintained.



For further information regarding the project please visit:

www.essexhighways.org/tindal-square

For general enquiries please email: tindalsquare@chelmsford.gov.uk